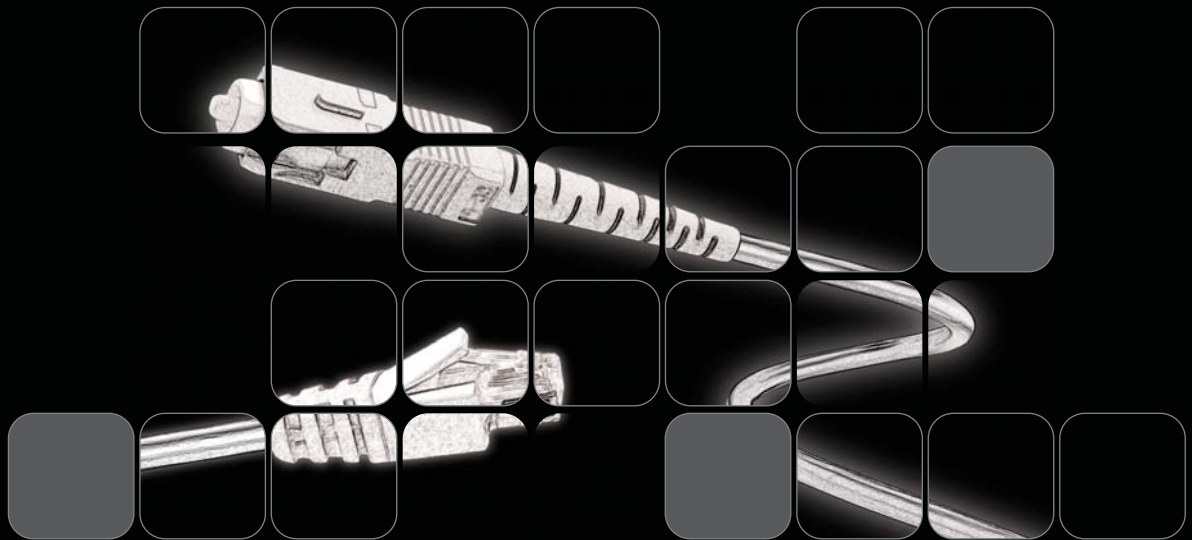


Network Equipment

Standards Overview

Looking for a Logical Decision...



Structured Cabling and Standards Overview

This easy to follow reference guide is designed to assist you in installing, termination and testing category unshielded twisted pair (UTP) cables to maximize their performance, and ensure they meet or exceed ANSI/TIA/EIA-568-B standards.

Overview of Cabling Standards

ANSI/TIA/EIA-568-B ('568-B) replaced ANS/TIA/EIA-568-A as the “commercial Building telecommunications cabling standard” in May 2001. All addenda of 568-A and all TSBs (67, 72, 75 and 95) have been incorporated in to the new standard.

The 568-B document is broken in to three sections:

B.1-general requirements

B.2-balanced twisted pair cabling components

B.3-optical fiber cabling components standards

For clarity and consistency, '568-B based terminology is used in the following overview.

Purpose

- To specify a generic voice and data telecommunications cabling system that will support a multi-product, multi-vendor environment.
- To provide direction for the design of telecommunications equipment and cabling products intended to serve commercial enterprises.
- To enable the planning and installation of a structured cabling system of commercial buildings that is capable of supporting the diverse telecommunications needs of building occupants.
- To establish performance and technical criteria for various types of cable and connecting hardware, and cabling system design and installation.

Scope

- Specifications are intended for telecommunications installations that are “office oriented.”
- Requirements are for a structured cabling system with a usable life in excess of 10 years.

Specifications addressed:

- ◆ Recognized media
- ◆ Cable and connecting hardware
- ◆ Performance
- ◆ Topology
- ◆ Cabling distance
- ◆ Installation practices
- ◆ User interfaces
- ◆ Channel performance

Cabling elements

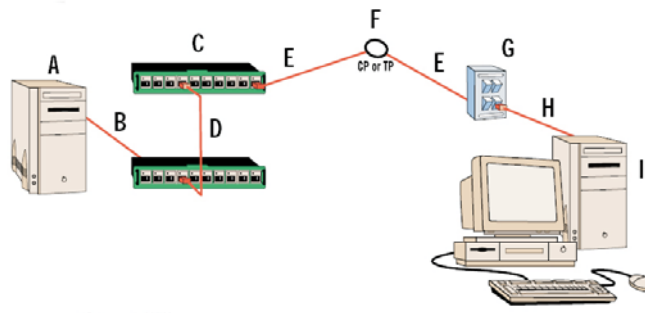
- Horizontal cabling:
 - ◆ Horizontal cross-connect (HC)
 - ◆ Horizontal cable
 - ◆ Consolidation point (CP) (optional)
 - ◆ Transition Point (TP) (optional)
 - ◆ Telecommunications Outlet/Connector (TO)
- Backbone cabling:
 - ◆ Main cross-connect (MC)
 - ◆ Interbuilding backbone cable
 - ◆ Intermediate cross-connect (IC)
 - ◆ Intra-building backbone cable
- Work area (WA)
 - ◆ Telecommunications room (TR)
 - ◆ Equipment room (ER)
 - ◆ Entrance facility (EF)
 - ◆ Administration

Horizontal cabling system structure

The horizontal cabling system extends from the telecommunications outlets in the work area to the horizontal cross-connect in the telecommunications room. It includes the telecommunications outlet, an optional consolidation point or transition point connector, horizontal cable, and the mechanical terminations and patch cords (or jumpers) that are parts of the horizontal cross-connect.

Telecommunications Room (TR)

- A = Customer premises equipment
- B = HC equipment cord
- C = Patch panel
- D = Patch cords/cross-connect jumpers used in the HC, including equipment cables/cords, should not exceed 6m (20 ft.)
- E = Horizontal cable 90m (295 ft.) max. total
- F = CP or TP (optional)
- G = Telecommunications outlet/connector (TO)
- H = W equipment cord
- I = WAPC



Standards

NOTES:

- An allowance of 10m (33ft.) has been provided for the combined length of patch cords/cross-connect jumpers and equipment cables/cords in the HC, including the WA equipment cords.
- An allowance is made for WA equipment cords of 3m (9.8 ft.)

Work area (WA)

Some points specified for the horizontal cabling subsystem include:

- Recognized horizontal cables:
 - 4-pair 100 unshielded Twisted pair (UTP) or screened Twisted pair (Ss TP)
 - 2-fiber (duplex) 62.5/125mm Or 50/125mm
- Multi-pair and multi-unit cables are allowed, provided that they satisfy the hybrid and bundled cable requirements of TIA/EIA-568-B.2
- grounding must conform to applicable building codes, as well as ANSI/TIA/EIA-607
- a minimum of two telecommunications outlets are required for each individual work area per TIA/EIA-568-B.1.

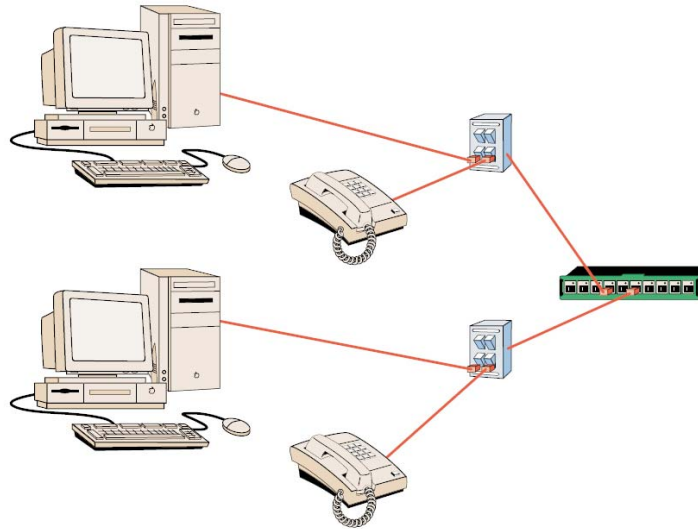


first outlet: 100 category 3 twisted pair (category 5e is recommended). **Second outlet:** 100 category 5e twisted pair (category 6 is recommended) or two-fiber multi-mode optical fiber either 62.5/125mm or 50/125mm.

- One transition point (TP) is allowed between different forms of the same cable type (i.e., where unrecorded cable connects to round cable).
- 50 coax and 150 STP-A cabling are not recommended for new installations.
- Additional outlets may be provided. These outlets are in addition to and may not replace the minimum requirements of the standard.
- Bridged taps and splices are not allowed for copper-based horizontal cabling (splices are allowed for fiber).
- Application-specific components shall not be installed as part of the horizontal cabling. When needed, they must be placed external to the telecommunications outlet or horizontal cross-connect (e.g., splitters, baluns).
- The proximity of horizontal cabling to sources of electromagnetic interference (EMI) shall be taken into account.

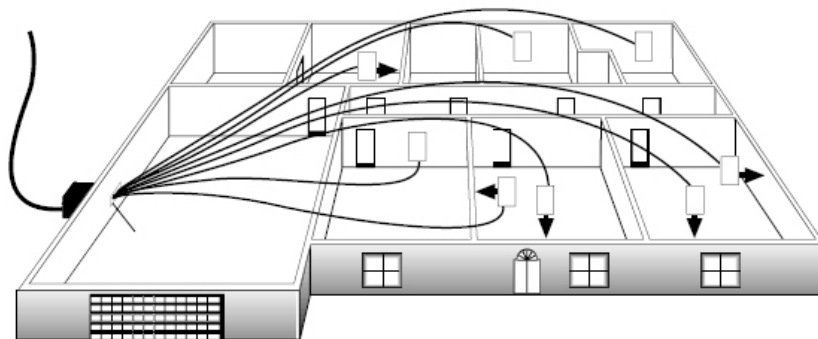
Star topology

Horizontal cabling shall be configured in a star topology, with each work area outlet connected to a horizontal cross-connect (HC) in a telecommunications room (TR).



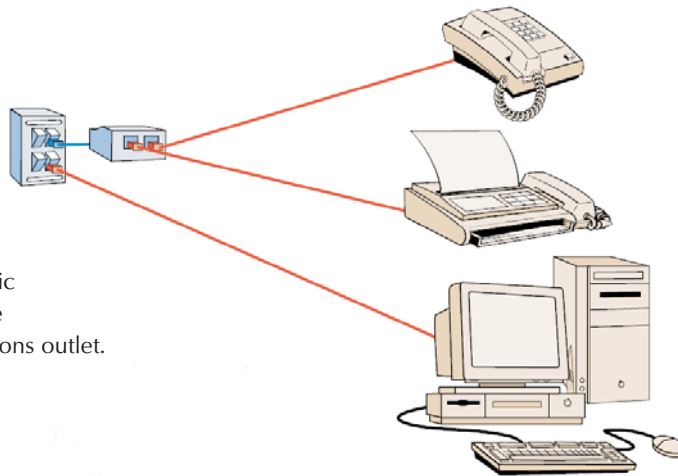
Home run cabling

A distribution method in which individual cables are run directly from the network interface device to each communications outlet in different rooms.



Work area

The telecommunications outlet serves as the work area interface to the cabling system.



Adapters and application Specific devices (such as baluns) shall be external to the telecommunications outlet.

Some specifications related to work area cabling:

- Equipment cords are assumed to have the same performance as patch cords of the same type and category.
- When used, adapters are assumed to be compatible with the transmission capabilities of the equipment to which they connect.
- Horizontal cable lengths are specified with the assumption that a maximum cable length of 3m (10 ft.) is used for equipment cords in the work area.

Note:

For establishing maximum horizontal channel distances, a combined maximum length of 10m (33 ft.) is allowed for patch cables (or jumpers) and equipment cables in the work area and the telecommunications room.

Horizontal distances of copper links (open office)

Copper work area cables connected to a MuTOA (Multi- user telecommunications outlet assembly) shall meet the requirements of '568-B.1. the maximum lengths of copper work area cables shall be determined according to:

$$C = (102-H)/1.2$$

$$W = C-5 (<20m)$$

Where:

C is the combined length of the work area cable, equipment cable and patch cord (m).

W is the combined length of the work area cable (m).

H is the length of the horizontal cable (m).

The above equations assume that there is a total of 5m (16 ft.) of patch and equipment cables in the telecommunications room. Table 1 shows the application of these formulas. The length of work area cables shall not exceed 20m (66 ft.). the MuTOA shall be marked with the maximum allowable work area cable length.

Table 1- maximum Length of Work Area Cables

Length of Horizontal cable	Maximum Length of work Area cable	Maximum combined Length of work area cables, patch cords And equipment cable
H m (ft.)	W m (ft.)	C m (ft.)
50 (295)	5 (16)	10 (33)
85 (279)	9 (30)	14 (46)
80 (262)	13 (44)	18 (59)
75 (246)	17 (57)	22 (72)
70 (230)	22 (71)	27 (89)

Twisted Pair (Balanced) Cabling

The three categories of transmission performance specified by TIA-568-B.2 for cables, connecting hardware, link and channel are:

Category 3

Transmission characteristics are specified up to 16 MHz

Typical Applications:

10BASE-T, 4Mbps Token Ring, 52 Mbps ATM, 100VG-ANYLAN

Category 5e

Transmission characteristics are specified up to 100 MHz

Typical Applications:

1000base-T (gigabit- ethernet), 100BASE-TX, 16Mbps token ring, 155 Mbps ATM

Category 6

Transmission characteristics up to 25 MHz

Typical Applications:

Gigabit Ethernet and beyond

Horizontal UTP cable

- Solid 4-pair 24AWG (0.51mm) specified, 22AWG (0.64mm) solid also allowed. An overall shield (ScTP) is optional.
- Performance marking should be provided to show the applicable performance category. These markings do not replace safety markings.
- Color coding:
 - White/blue - blue
 - White/orange - orange
 - White/green - green
 - White/brown - brown



UTP patch cords & cross-connect jumpers

- Patch cords should use stranded conductors for adequate flex life.
- Patch cords must meet the minimum performance requirements for horizontal cable except that 20 percent more attenuation is allowed by 568-B.2.
- Performance markings should be provided to show the applicable transmission category in addition to safety markings.
- Insulated O.D. of stranded wires should be 0.8mm (0.032 in.) to 1mm (0.039 in.) to fit into a modular plug.
- Color codes for stranded, 100Ω UTP Patch cord:

White/blue-blue	PAIR1
White/orange-orange	PAIR2
White/green-green	PAIR3
White/brown-brown	PAIR4



- Color code for cross-connect jumpers: one conductor white, the other a visibly distinct color such as red or blue.

Note:

because of their identical pair groupings, patch cords terminated with either T568A or T568B pair assignments may be used interchangeably, provided that both ends are terminated with the same pin/pair scheme.

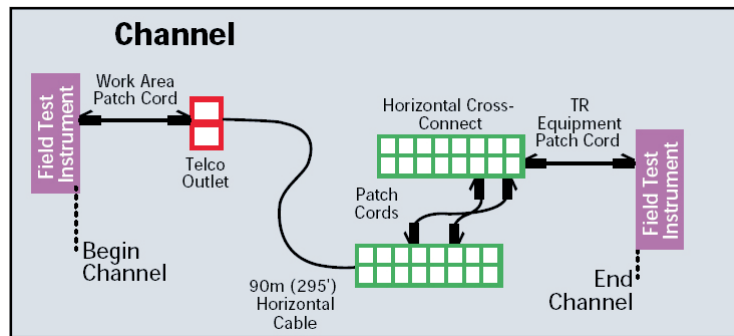
Nominal velocity of propagation (NVP) for general cable products

Category	CMR NVP	CMP NVP
Category 3	64	65
Category 5e	70	72
Category 6	70	72

TIA/EIA-568-B.1

Channel test configuration

The channel test configuration is to be used by system designers and users of data communications systems to verify the performance of the overall channel. The channel includes up to 90m (295 ft.) of horizontal cable, a work area equipment cord, telecommunications outlet/connector, an optional transition/consolidation connector and two connections in the telecommunications room. The total length of equipment cords, patch cords or jumpers, and work area cords shall not exceed 10m (33 ft.). the connections to the equipment at each end of the channel are not included in the channel definition.

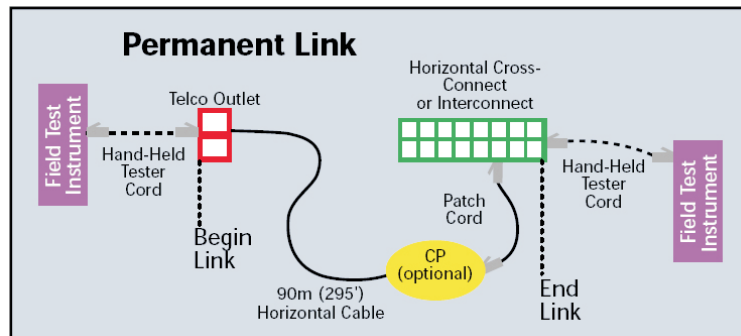


Channel	TIA/EIA-568-B Category 3 (@ 16 MHz)	TIA/EIA-568-B Category 3 (@ 100 MHz)	TIA/EIA-568-B Category 6 (@ 100/250 MHz)
Attenuation (dB)	14.9	24.0	21.3/35.9
NEXT (Db)	19.3	30.1	39.9/33.1
ELFEXT (Db)	N/A	17.4	23.3/15.3
Return Loss (dB)	N/A	10.0	12.0/8.
ACR (Db)	4.4	6.1	18.6/N/A

TIA/EIA-568-B.1

Permanent Link Test Configuration

The permanent link test configuration is to be used by installers and users of data telecommunications systems to verify the performance of permanently installed cabling and one connection at each end, and may also include an optional transition/consolidations point connection. The permanent link excludes both the cable portion of the field test instrument cord and the connection to the field test instrument.



Permanent Link	TIA/EIA-568-B Category 3 (@ 16 MHz)	TIA/EIA-568-B Category 3 (@ 100 MHz)	TIA/EIA-568-B Category 6 (@ 100/250 MHz)
Attenuation (dB)	13.0	21.0	18.6/31.1
NEXT (Db)	21.0	32.3	41.8/35.3
ELFEXT (Db)	N/A	18.6	24.2/16.2
Return Loss (dB)	N/A	12.0	14.0/10.0
ACR (Db)	8.0	11.3	23.2/4.2

TIA/EIA-568-B.2

The transmission performance of a cabling system depends upon the characteristic of the horizontal cable, connecting hardware, patch cords, equipment cords, work area cords, cross-connect wiring, the total number of connections, and the care with which they are installed and maintained. The development of high-speed applications requires that cabling systems be characterized by transmission parameters such as insertion loss, PSNEXT loss, return loss, and PSELFEXT, system designers use these performance criteria to develop applications that utilize all four pairs in a cabling system for simultaneous bi-directional transmission. This standard provides minimum cabling component and cabling performance validations. This standard also specifies field test instruments and applicable reference measurement procedures for all transmission parameters.

This standard specifies minimum requirements for balanced twisted pair telecommunications cabling components that are used up to and including the telecommunications outlet/connector and between buildings in a campus environment. This standard specifies the minimum performance requirements for recognized balanced twisted (i.e. cable, connectors, connecting hardware, patch cords, equipment cords, work area cords and jumpers) and for the field test equipment used to verify the performance of these components as installed.

TIA/EIA-568-B.3

Optical fiber cabling components

This standard contains the performance specifications for the optical fiber cables recognized in premises cabling standards. Cable transmission performance for the outside plant telecommunications cable shall comply with ANSI/ICEA S-87-640, inside plant optical fiber telecommunications cable shall comply with ANSI/ICEA S-83-596. Each cabled fiber shall meet the graded performance specifications of the table to the right.

The optical fiber cable construction shall consist of 50/125mm or 62.5/125mm Multi mode optical fibers or single mode optical fiber, or a combination of these media. Individual fibers or groups of fibers. Shall be identifiable in accordance with ANSI/TIA/EIA-598-Z, The cable shall be listed and marked as required under the applicable electrical code and local building code requirements.

Bend radius

Inside plant: 2- and 4- fiber cables intended for horizontal or centralized cabling shall support a bend radius of 1 inch under no-load conditions. 2- and 4- fiber cables intended to be pulled through horizontal pathways during installation shall support a bend radius of 2 inches under a pull load of 222N (50 lbf). All other inside plant cables shall support a bend radius of 10 times the cable's outside diameter when not subject to tensile load, and 15 times the cable's outside diameter when subject to tensile loading up to the cable's rated limit.

Outside plant: Optical fiber cables shall be of a water-block construction and meet the requirements for compound flow and water penetration. Outdoor cable shall have minimum pull strength of 2670N (600lbf). Outside plant cables shall support a bend radius of 10 times the cables outside diameter when not subject to tensile loading up to the cable's rated limit.

Optical fiber cable transmission performance parameters

Optical Fiber Cable Type	Wavelength (nm)	Max. Attenuation (dB/km)	Min, information Transmission capacity For over filled launch (MHz/km)
50/125 m	850	3.5	500
Multi mode	1300	1.5	500
62.5/125 m	850	3.5	160
Multi mode	1300	1.5	500
Single mode	1310	1	N/A
Inside plant	1550	1	N/A
Single mode	1310	0.5	N/A
Outside plant	1550	0.5	N/A

Straight - through or reversed

Modular cords are used for two basic applications. One application uses them for patching between modular patch panels. When used in this manner, modular cords should always be wire "straight-through" (pin 1 to pin 1, pin 2 to pin 2, pin 3 to pin 3, etc.). the second major application uses modular cords to connect the workstation equipment (PC, phone, FAX, etc.) to the modular outlet. These modular cords may either be wired "straight-though" or "reversed" (pin 1 to pin 6, pin 2 to pin 5, pin 3 to pin 4, ect.). Depending on the system manufacturer's specifications. This "reversed" wiring is typically used for voice systems. The following is a guide to determine what type of modular cord have.

How to read a modular cord

Align the plugs side-by-side with the contacts facing you and compare the wire colors from left to right. If the colors appear in the same order on both plugs, the cord is wired "straight-through." If the colors appear reversed on the second plug (from right to left), the cord is wired "reversed," to do a cross-over, put 568A on one end and 568B on the other.



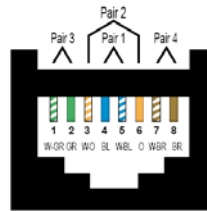
Common outlet configurations

Two wiring schemes have been adopted by the '568-B and' 11801 Standards. They are nearly identical except that pairs two and three are reversed. T568A is the preferred scheme because it is compatible with 1 or 2- pair USOC systems. Either configuration can be used for integrated services digital network (ISDN) and high speed data applications. Transmission categories 3, 5e and 6 are only applicable to this type of pair grouping.

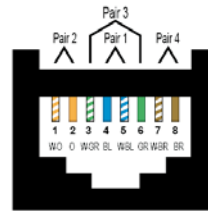
Common outlet configurations

10 BASE-T & 100 BASE-T

wiring Specifies an 8- position jack But uses only 2 pairs. These Are pairs 2 and 3 of T568A and T568B schemes. 1000BASE-T Will use all 8 pins.

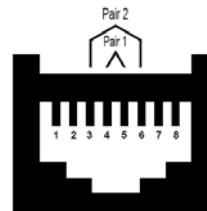


T568A

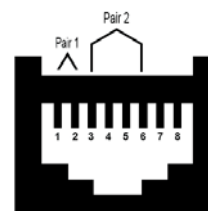


T568B

Token ring wiring uses either an 8- position or 6- position jack. The 8- position format is incompatible with T568A, T568B and USOC wiring schemes.

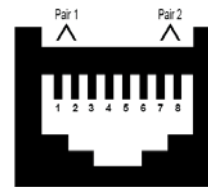


TOKEN RING (802.5)



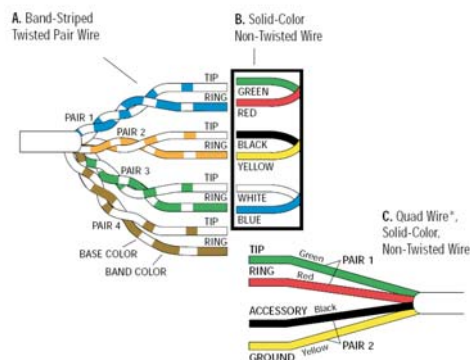
10BASE-T (802.3)

ANSI X3T9.5 TP-PMD uses The two outer pairs of an 8- position jack. These positions Are designated as pair 3 and Pair 4 of the T568A wiring scheme. This wiring scheme is also used for ATM.



TP-PMD (X319.5) & ATM

Wire color codes



Standards

Standard 4pair wiring color codes

PAIR 1	T R	White/Blue Blue/White
PAIR 2	T R	White/Orange Orange/White
PAIR 3	T R	White/Green Green/White
PAIR 4	T R	White/Brown Brown/White

Note:

White band-stripe on ring conductor is optional.

For 6-wire jacks use pair 1, 2 and 3 color codes.

For 4-wire jacks use pair 1 and 2 color codes.

***CAUTION**

Quad wire is no longer acceptable for installation in multi-line environments. If encountered during a retrofit, quad wire should be replaced with 100 UTP if possible. Connection new quad to installed quad will only amplify existing quad in place and connection 100 UTP to it may also be ineffective, as the quad wire may negate the desired effect of the UTP.

Application Specification Pair Assignments

Application Specification Pair Assignments for 100 OHM Cabling

Application	Pins 1-2	Pins 3-4	Pins 5-6	Pins 7-8
ISDN	Power	TX	RX	Power
Analogue Voice	-	-	TX/RX	-
802.3 (10Base-T)	TX	RX	-	-
802.5(Token Ring)	-	TX	RX	-
FDDI (TP-PMD)	TX	Optional ¹	Optional ¹	RX
ATM User Device	TX	Optional ¹	Optional ¹	RX
ATM Network Equipment	RX	Optional ¹	Optional ¹	TX
1000Base-T	TX/RX	TX/RX	TX/RX	TX/RX
1000Base VG (802.12)	*Bi	Bi	Bi	Bi
100Base-T4(802.3u)	TX	RX	Bi	Bi
100Bas-TX (802.3u)	TX	RX	-	-

*Bi = Bi-directional TX = Transmit RX = Receive

¹Optional termination may be required by some manufacturers active implementation

Recommended cabling practices

Do:

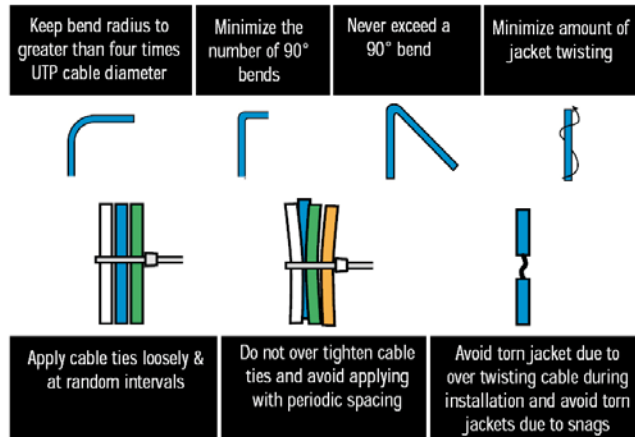
- Do terminate each horizontal cable on a dedicated telecommunication outlet.
- Do locate the main cross-connect near the center of the building to limit cable distances.
- Do maintain the twist of horizontal and backbone cable pairs up to the point of termination.
- Do tie and dress horizontal cables neatly.
- To avoid stretching, pulling tension should not exceed 100N (25 lbf) for 4- pair cables.
- Installed bend radii shall not exceed:
 - ◆4 times the cable diameter for horizontal UTP cables.
 - ◆10 times the cable diameter for multi- pair backbone UTP cables.
- Horizontal cables should be used with connection hardware and patch cords (or jumpers) of the same performance category or higher.
- Avoid cable stress, as caused by
 - ◆Cable twist during pulling or installation
 - ◆Tension is suspended cable runs
 - ◆Tightly cinched cable ties or staples
 - ◆Tight bend radii

Do not:

- Do not use connection hardware that is of a lower category than the cable being used.
- Do not create multiple appearances of the same cable at several distribution points (called bridged taps).
- Do not over- tighten cable ties, use staples, or make sharp bends with cables.
- Do not place cable near equipment (I.e., generators, transformers, engines, medical equipment, etc.) that may generate high levels of electromagnetic interference.
- Do not exceed 90 bend.

Important note: installed UTP cabling shall be classified by the least performing component in the link.

RECOMMENDED CABLING PRATICES



UTP connector terminations

- Pair twists shall be maintained as close as possible to the point of termination.
- Untwisting shall not exceed 75mm (3 inches) for category 3 links and 13mm (0.5 inch) for category 5e and category 6 links.
- Connection hardware shall be installed to provide well- organized installation with cable management and in accordance with the manufacturer's guidelines.
- Strip back only as much jacket as is required to terminate individual pairs.
- To maintain cable geometry, remove the cable jacket only as much as necessary to terminate the cable pairs on the connection hardware.

NEC fire resistance levels

Communication wire and cable for premise installations in accordance with article 800 and other applicable parts of the nation electrical code (NEC) latest issue. Communication wire and cables for Canada are in accordance with the harmonized Canadian standard association C22.2 No. 214, underwriters laboratories UL 444 latest issue.

Standards

Fire resistance Level	Test Requirement	NEC article			
		800	725	760	82
(Highest) Plenum Cables	UL-910 (Steiner tunnel)	CMP	CL3P CL2P	FPLP	CATVP
Riser Cables Multiple Floors	UL-1666(Vertical Shaft) CSACMG(Vertical Tray)	CMR	CL3R CL2R	FPLR	CATVR
General purpose Cables	UL-1581 (Vertical Tray)	CMG	CL3 CL2	FPL	CATV
(Lowest) Residential Cables restricted use	CSACMG(Vertical Tray) UL-1581 VW-1	CMX	CL2X CL3X		CATVX

Note:

1. cables with a higher fire resistance level may be substituted for those with a lower fire resistance level.
2. Non- fire rated outside plant telephone cables may no run outside of a rigid mental conduit more than 50 feet from the point of entrance into a building.
3. Cables rated CMG or CM may be used in runs penetrating one floor (NEC 800-53).

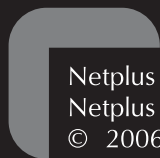


Netplus Group Co., Ltd.

**Headquarter/ R&D Dep. (Taiwan):
Info@netplusgroup.com**

**Sales/ Factory Office (China):
sales@netplusgroup.com**

www.netplusgroup.com



Netplus Logo is a trademark or registered trademark of
Netplus Group co.,Ltd. in the Taiwan and other countries.
© 2006 Netplus Group co.,Ltd. All Rights Reserved.